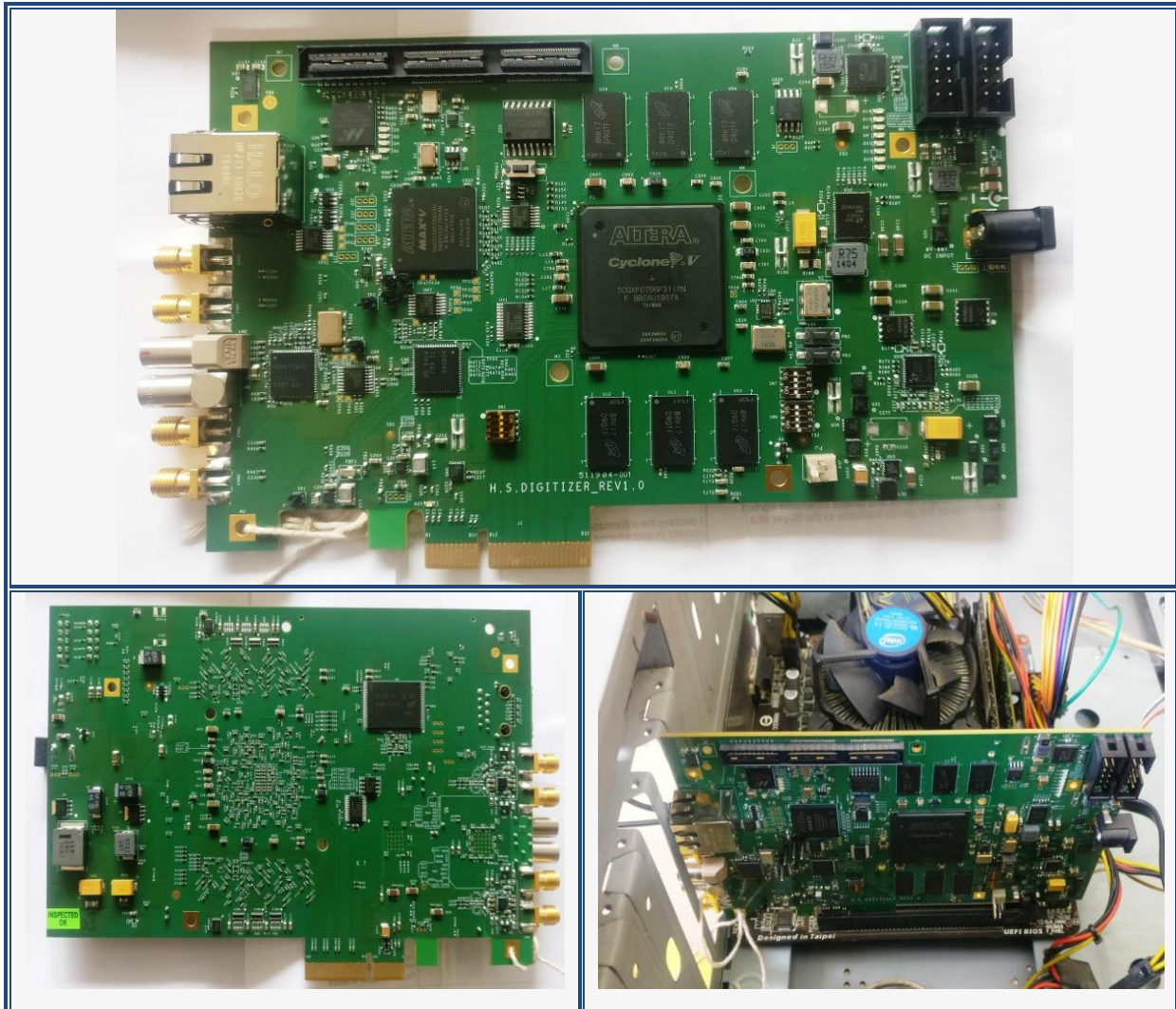




**Table 3 – FPGA BASED VERY HIGH SPEED PCIE DIGITIZER CARD**



**This is a very high speed digitization and signal processing card having standard PCI express form factor – 165mm by 106mm consisting of the followings:-**

- 2 Channel, 14 bit, 250 MSPS ADC for each channel.
- CYCLONE V GX FPGA having very high speed transceiver, high logic density and dual Hard Memory Controllers.
- CPLD for clock generation, glue logic and Fast Passive Parallel programming interface.
- Dual 4GB DDR3 SDRAM Memory with Error Detection and Correction, each having 800 MTS interface.
- Active Clock Jitter Cleaners.
- Active serial flash for serial flash configuration for FPGA.
- 1Gb, parallel NAND / NOR Flash for 16 bit Fast Passive Parallel programming interface.
- On board RGMII ETHERNET Interface having TRI-MODE Ethernet MAC 10/100/1000 Mbps.
- PCIe 2.5Gbps X 4 Lane allowing DMA data and control transfer at the rate of 10Gbps with COTS / PC.
- JTAG Interface for ISP.